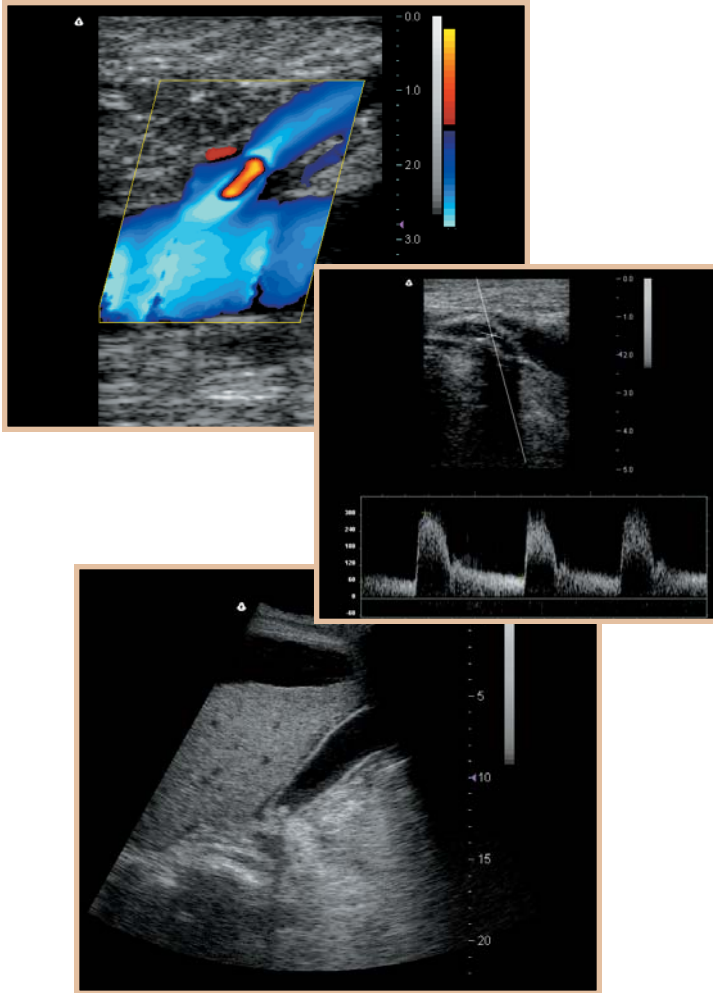


# terason™ AD

## ultrasound imaging



### Diagnostic Coverage

- Radiology
- Cardiology
- OB/GYN
- Emergency Medicine
- Family Practice
- Internal Medicine
- Nephrology
- Vascular
- Urology
- Ophthalmology
- Gastroenterology
- Women's Health
- Surgical
- Sports Medicine
- Interventional Radiology
- Telemedicine
- Veterinary

### ▶ 2-D Digital Imaging

128 digital beamforming channels deliver excellent image uniformity, tissue contrast resolution, and steering flexibility in frequencies from 2 MHz to 10 MHz. The high channel count supports true phased array and high-element count imaging transducers.

### ▶ M-Mode

Simultaneous 2-D and M-Mode imaging is valuable for the efficient assessment of moving structures.

### ▶ Power Doppler

The high dynamic range inherent in the SuperChip design provides superb Doppler sensitivity and penetration for all applications.

### ▶ Directional Power Doppler

With the addition of directional information, the utility of Power Doppler is expanded to differentiate flow directions.

### ▶ Color Doppler

Detailed information on mean velocities acquired by Doppler studies can be enhanced through the use of Color Doppler.

### ▶ Pulsed Wave Spectral Doppler

Spectral Doppler and 2-D imaging are displayed on screen simultaneously for accurate sample volume placement. The relative sizes of the individual displays of the two waveforms are easily adjustable.

### ▶ Electronic Steering

All Terason Doppler Imaging modes allow sample volumes to be electronically steered up to 20 degrees, left or right.

# terason™ AD

## ultrasound imaging

▶ The Terason 128 Advanced Ultrasound Imaging Package provides one of the most feature-rich, price performance systems available today. By taking advantage of proprietary developments in Doppler software and PC technologies, your investment in future capabilities is assured.



### Product Features

- 2-D digital imaging
- Automatic image optimization
- Real-time and frozen zoom capability
- Image enhancement utilities
- User programmable and preset protocols
- Linear, circumference/area, and volume measurements
- OB and vascular calculations
- Alphanumeric keyboard
- Local Information Management System; export as Bitmap or TIFF
- DICOM/PACS compatible
- Ethernet/Modem connections
- Print and VCR outputs
- CINE (dynamic clip) storage & playback
- Telemedicine-ready
- 10,000+ image archiving capacity
- Integrated CDRW drive

### Image Display

- Windows Graphical User Interface (GUI)
- Single/Dual monitor capability
- Up to 100 fps
- True Color (32 bit)

### Measurement Tools

- Distance—multiple calipers
- Circumference/Area—multiple calipers
- Volume

### Image Archiving

- Storage in excess of 10,000 images
- Dynamic clip storage
- Ethernet/Modem
- VCR connectivity
- Printer connectivity
- CDRW

### Imaging Modes

- 2-D
- M-mode
- Power Doppler
- Directional Power Doppler
- Color Doppler
- Pulsed Wave Spectral Doppler
- Real-time Triplex Option\*

### Third Party Software

- OB reporting package\*
- DICOM transfer and print utilities\*
- 3-D rendering\*
- Voice activation\*

### Physical Characteristics

(Terason Electronics Envelope)

- Height: 1.95 inches (4.95 cm)
- Width: 2.75 inches (6.98 cm)
- Length: 7.60 inches (19.30 cm)
- Weight: Avg. 10 ounces (280 grams)

### PC Specifications

- Windows 2000 or XP OS
- 40 GB Hard Drive
- 512 MB RAM
- CDRW Drive
- Composite video, RS 232, Ethernet, Parallel Port

### Power

- Operates via battery or AC power
- Battery: rechargeable lithium ion
- AC: via medical grade power supply 100-240 VAC; 50-60 Hz; 150 VA max.

### Regulatory

FDA 510(K)

CE – European Medical Device  
Electromagnetic Compatibility –  
IEC 60601-1-2

Acoustic Safety – AIUM/NEMA Output  
Electrical Safety – (Int'l) IEC 60601-1  
and (US) UL 2601-1

ETL Listing – USA & Canada

\*Optional Features

**terason™**  
ultrasound  
system

Terason™ Division of Teratech Corporation  
77-79 Terrace Hall Avenue, Burlington, MA 01803  
781-270-4143  
Fax: 781-270-4145  
www.terason.com