

terason™

transducers

To tap the full potential of the Terason Ultrasound System, new transducer technologies have been integrated. The resulting designs, using the latest acoustic ceramic materials, provide increased sensitivity and resolution which yield more clinical information and expanded applications. These ergonomically-designed transducers provide easier imaging access, increased operator comfort and greater clinical impact.

► Applications

- Pediatrics
- Neonatal
- Ob/Gyn
- Neurosurgery



▲ MicroConvex Neonatal Abdomen

8MC4

Tightly Curved Array Wideband 128 Elements Transducer

MicroConvex Neonatal Head
with Simultaneous PWD ▼



Technical Specifications

Format: Tightly Curved Array

Number of elements: 128

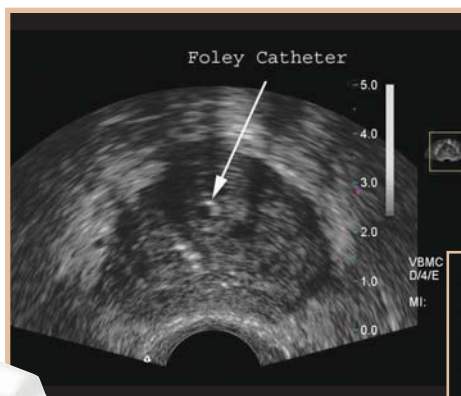
Array footprint: 30 mm

Maximum depth: 15 cm

Multi-frequency capable: Yes

Field-of-view: 140°, user controlled scan angles

Doppler modes: Power Doppler, Directional Power Doppler, Color Doppler, Pulsed Wave Spectral Doppler

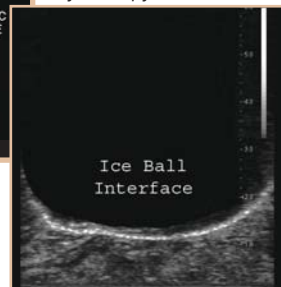


▲ Bi-Plane Prostate Cancer
with Foley Catheter

8B4S

Bi-plane endorectal Wideband 128 x 128 Elements Transducer

Bi-Plane Prostate
Cryotherapy Procedure ▼



► Applications

- Urology
- Prostate imaging for therapeutic procedures
 - Cryotherapy
 - Brachytherapy

Technical Specifications

Format: Tightly curved linear and 128 linear

Number of elements: 128

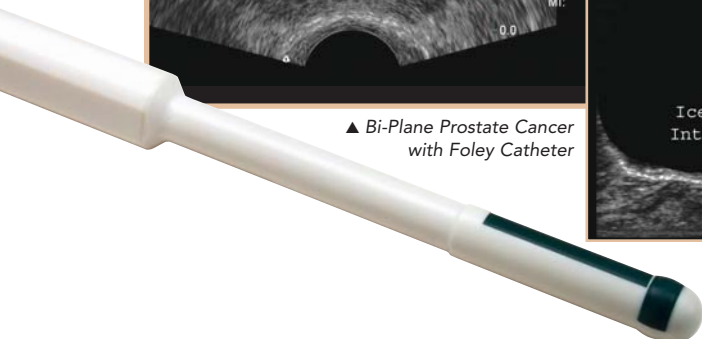
Array footprint: TCL, 13 mm radius. Linear, 52 mm long

Maximum depth: 12 cm

Multi-frequency capable: Yes

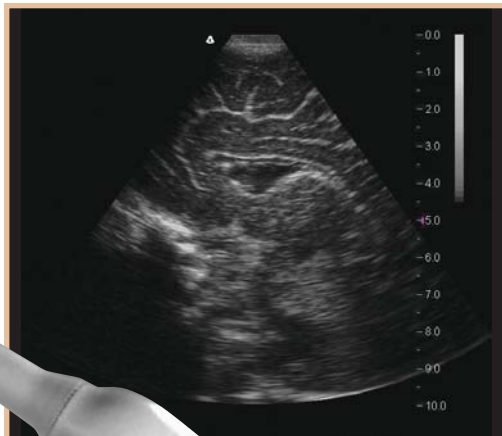
Field-of-view: User controllable

Doppler modes: Power Doppler, Directional Power Doppler, Color Doppler, Pulsed Wave Spectral Doppler



terason™

transducers



10V5 Phased Array
Sagittal Neonatal Head

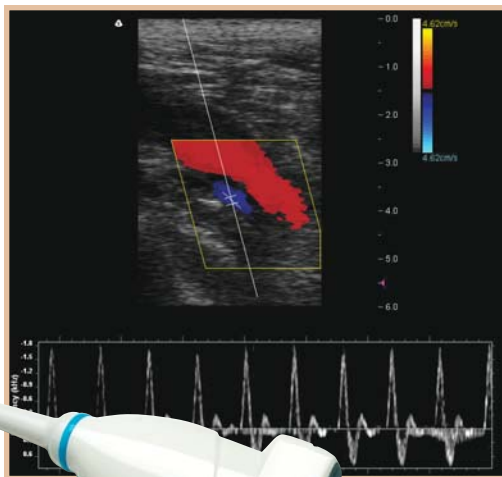
10V5 Phased Array Wideband 128 Elements Transducer

► Applications

- Pediatrics
- Neonatal
- Ob/Gyn
- Neurosurgery

Technical Specifications

Format: Phased Array
Number of elements: 128
Array footprint: 20 mm
Maximum depth: 14 cm
Multi-frequency capable: Yes
Field-of-view: User controllable
Doppler modes: Power Doppler, Directional Power Doppler, Color Doppler, Pulsed Wave Spectral Doppler



Deep Femoral Arterial
Simultaneous Triplex
Imaging with
Triphasic PWD

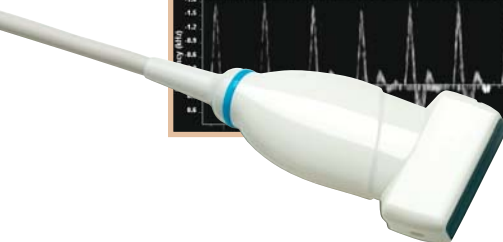
7L3 Linear Wideband 128 Elements Transducer

► Applications

- Small Parts
- Peripheral vascular
- Deep arterial and venous structures

Technical Specifications

Format: Linear
Number of elements: 128
Array footprint: 38 mm
Maximum depth: 120 mm
Multi-frequency capable: Yes
Field-of-view: User controllable
Doppler modes: Power Doppler, Directional Power Doppler, Color Doppler, Pulsed Wave Spectral Doppler



terason™
ultrasound
system

Terason™ Division of Teratech Corporation
77-79 Terrace Hall Avenue, Burlington, MA 01803
781-270-4143
Fax: 781-270-4145
www.terason.com