



## Revolutionizing ultrasound

### Imaging Modes

- B-Mode
- M-Mode
- Power Doppler
- Color Doppler
- PW Spectral Doppler

### Physical

- Dimensions: 14.35 x 9.82 x 2.25"
- Weight: 10.5lbs/4.8kg

### Monitor

- 15.4" (diagonal) TFT LED backlit hi-res widescreen display
- Anti-glare screen
- Adjustable brightness

### Additional Imaging Functionality

- Electronic beam steering
- OmniBeam™
- TeraVision™ II
- Split-screen dual display
- Simultaneous 2D/Color
- Trapezoidal imaging

### Measurements and Calculations

- Preset-specific caliper measurements and annotations
- User-configurable measurements and annotations

### Digital Image Storage and Management

- 320GB internal hard drive
- Built in DVD/CD±R/W drive
- Internal storage for 250,000+ images
- Storage of static images and dynamic clips
- User-selectable formats: AVI, BMP, JPG, DICOM
- USB 2.0
- SD card slot
- EZ-Viewer™ self-installing viewing software

### Optional Compatible Devices

- Medical grade thermal printer (monochrome)
- USB foot switch

### Mobile Cart Option

- Ergonomic
- Locking wheels
- Adjustable probe/gel holders
- Storage bin and cable management
- Printer shelf
- Height adjustable
- Dimensions: 21.5 x 23.8 x 31.5 - 41.5"
- Weight: 75 lbs.
- Security lock

### Broadband Transducer

- 15L4 Linear Array

### Input

- Slide-out ultrasound control console
- Hot-swappable transducer connector
- Standard keyboard

### Connectivity

- EMR compatible
- 1000Mbps Ethernet networking
- 802.11n wireless networking
- VGA, DVI, HDMI capable

### Other Features

- Windows 7 OS
- Energy Star rated laptop
- Cable lock slot on laptop
- Built in stereo speakers, camera, and microphone
- Remote support ready

### Power Supply

- Rechargeable Lithium-Ion battery or AC power
- Universal medical-grade power supply
- Input voltage: 100 to 240 V AC
- Frequency: 50 to 60 Hz

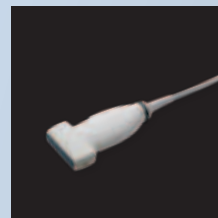
### Standards, Safety and Regulatory

- US FDA 510(k) Clearance
- DICOM 3.0 conformance
- Electrical safety standards:
- IEC 60601-1/MDD/CE Mark
- CSA 601.1
- UL 2601-1



*revolutionizing  
ultrasound*

Terason, a division of Teratech Corporation  
77 Terrace Hall Avenue • Burlington MA 01803  
1-866-TERASON • 781-270-4143 • www.terason.com  
©2011 Teratech Corporation. All rights reserved. 16-3235 Rev 1



**15L4 Linear Array**

An affordable investment in a Terason system is protected for years to come with fast, responsive remote support, full-coverage warranties, and a comprehensive upgrade path.