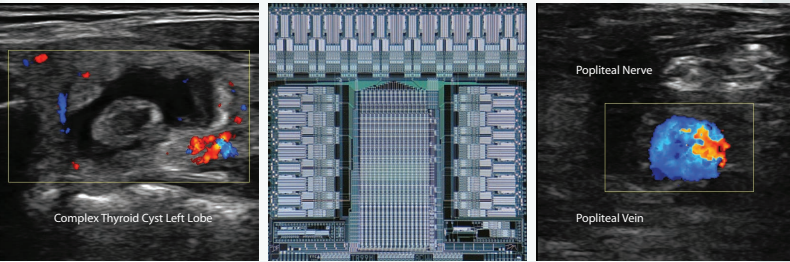


 **smart**<sup>®</sup>  
3200T  
NexGen

**SuperHarmonic™ Imaging Power**



The New Look of Ultrasound.

 **terason**<sup>®</sup>



## big power in a small package

Terason continues its leadership role in ultrasound with the **uSmart® 3200T NexGen**. A new *SuperHarmonic™* engine provides the system with imaging performance unrivaled in the industry.

Developed by top ultrasound experts, the portable solution provides the advanced features and functionality needed to perform fully diagnostic exams, and is easy enough for the beginner to scan with factory presets and familiar touchscreen capabilities.

**See What Others Miss...** Terason's proprietary *SuperHarmonic* imaging capability clarity. A more powerful imaging experience with enhanced contrast resolution that makes border for your patients.



### The Terason Commitment

We realize the commitment you make to your patients, and we stand behind you. From initial training and online support, to our easy upgradeability, you can count on Terason to partner with you, building your trust, bolstering your efficiency and keeping your investment at the forefront of technology for years to come.

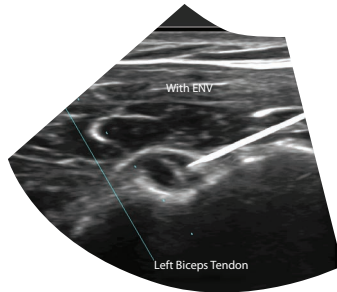
The Terason **uSmart 3200T NexGen** is an indispensable tool for point-of-care applications such as:

- Anesthesia
- Breast
- Critical Care
- Emergency Medicine
- EMS
- Musculoskeletal
- Phlebology
- Vascular Access

## Focused on You

- CW Doppler
- Smart Gestures™
- Removable Battery
- Multi-Probe Connector Kit
- ECG Capabilities
- Sealed, Cleanable Surface
- uConnect™ Remote Capabilities
- Fast Boot-Up Time

- Gorilla® Glass
- 256 GB SSD
- Durability Tested



now allows you to see even more with enriched detail and is easy to see, and the more you can see, the more you can do

## Introducing the uSmart 3200T NexGen Ultrasound System with Enhanced Image Quality



## Terason's Transducers

Our family of Transducers are lightweight and ergonomic, ideal for easy scanning.

15L4 Smart Mark™ Linear Array



16L5 Smart Mark™ Linear Array



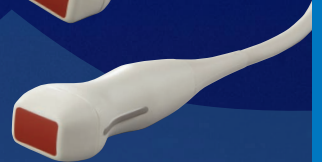
8L2 Smart Mark™ Linear Array



4V2 Phased Array



8V3 Phased Array



5C2 Curved Array



9MC3 Curved Array



8EC4 Endocavity



16HL7 High Frequency Linear Array



Pedoff



For more information visit [www.terason.com](http://www.terason.com)

# uSmart 3200T NexGen Ultrasound System Specifications

## Imaging Modes

- 2D (B-Mode)
- M-Mode
- Color Doppler
- Pulsed Wave Doppler
- Power Doppler
- Directional Power Doppler
- Continuous Wave Doppler
- Tissue Doppler
- Tissue Harmonic Imaging with *SuperHarmonics™*

## Imaging Features

- Enhanced Needle Visualization (ENV)
- TeraVision™ II
- OmniBeam™
- Dynamic Depth Resolution (DDR™)
- TeraZoom™
- Trapezoid
- Triplex/Duplex (Simultaneous/Non-Simultaneous)
- Split Screen
- Full Screen
- Auto Optimization
- 2D Beam Steering
- Application-Specific Presets
- Post Processing
- TeraScape™
- Intima-Media Thickness (IMT)

## System Features

- Touch Screen with Smart Gestures™
- 11.6" Backlit High-Resolution LCD with Gorilla Glass
- 256 GB Solid State Drive (SSD)
- Still Frame Image Export (BMP, JPEG)
- Dynamic Clip Export (AVI)

- DICOM 3.0 Compliant
- DICOM Structured Reporting (DICOM SR)
  - Cardiac
  - Vascular
- uConnect™ Remote Capability
- USB 3.0 Port
- Ethernet Port
- SD Memory Card Slot
- Wireless and Bluetooth
- Stereo Speakers
- Headphone Jack
- Built-In Camera
- Cold Boot-Up Time: < 45 Seconds
- Smart Mark™
- Smart Guide™
- Micro HDMI Port
- Removable Battery and DC Input
- Built-in 5 Megapixel Camera

## Measurement Packages

- Cardiology
- OB
- Vascular

## Operating System

- Windows® 10

## Physical System Specifications

System Dimensions:

- Height: 9"/230 mm
- Width: 13"/327 mm
- Depth: 1.25"/36 mm

System Weight: 4.85 lb/2.23 kg

## Mobile Cart

- Multi-Probe Connector Kit (Optional)
- 3 Transducer Holders
- 1 Active Probe Holder
- Thin, Sleek Body Style
- Mobile Design
- 4-Wheel Steering for Excellent Mobility
- 4 Locking Wheels
- Shelf with Handle and Removable Gel Holder
- On-Cart Storage Basket
- Transducer Connector Holders with Cable Management Hooks

Physical Specifications:

- Weight: 37 lb / 16.78 kg
- Work Surface Height: 38"/96.52 cm
- Height: 52"/132.08 cm
- Base Diameter: 20" x 20"/50.80 cm x 50.80 cm



Terason Division • Teratech Corporation

77 Terrace Hall Avenue, Burlington, MA 01803 • 1-866-TERASON • 781-270-4143 • www.terason.com

CE 0413

©2017 Teratech Corporation. All rights reserved.

Terason and uSmart are registered trademarks of Teratech Corporation. OmniBeam, TeraZoom, TeraVision, DDR, uConnect, Smart Gestures, Smart Mark, Smart Guide and SuperHarmonic are trademarks of Teratech Corporation. Windows is a registered trademark of Microsoft Corporation. Gorilla is a registered trademark of Corning. 16-3267

REV. 11.3-17