

 **smart**[®]
3300

**Smart Design
in a Portable System**



The New Look of Ultrasound.

 **terason**[®]



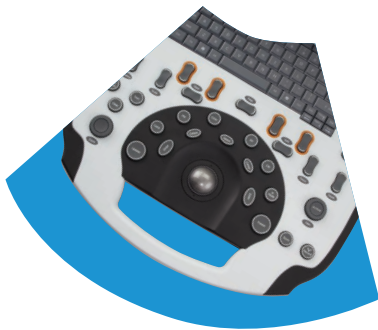
Terason® introduces *the new look of ultrasound*. A fusion of Smart Technology and Smart Resolution Imaging deliver an innovative and intuitive system with elite performance.

The newest member of the ultrasound family affords quick and easy start-up, ideal for Anesthesia, Cardiology, Critical Care, Emergency Medicine, Musculoskeletal, OB/GYN, Vascular and more. With advanced computer technology and our proprietary design, the uSmart® 3300 is a powerful diagnostic ultrasound system.



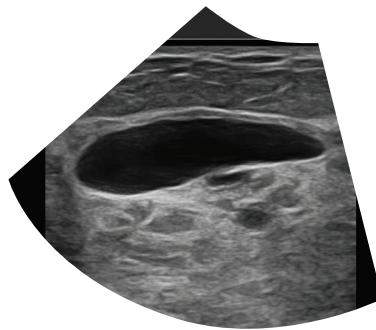
The Best Tools For Your Practice

- 1 TB Hybrid Hard Drive
- Multi-Probe Connector Kit
- Smart Resolution Imaging
- Security/Encryption
- Ergonomic Soft Keys
- TeraVision™ II
- Durable and Impact-Resistant
- Sealed Console
- Fast Boot-Up Time
- Open Architecture
- Smart Console
- Smart Guide™
- Intuitive Interface
- Dynamic Depth Resolution (DDR™)
- Enhanced Needle Visualization (ENV)
- Large Optical Trackball
- DICOM Structured Reporting
- Intima-Media Thickness (IMT)



Smart Console Design

A familiar layout just got better! Reliable and responsive high-quality buttons and a durable, impact-resistant design for added protection are coupled with ergonomic soft key positioning and toggle buttons that reduce keystrokes, providing better productivity and efficiency.



Smart Resolution Imaging

A combination of Terason's revolutionary CDP beamformer technology and unique IIR signal processing produce an image with heightened clarity and definition. This quality coupled with a high-contrast LCD, with a wide viewing angle of 170°, will provide the best diagnostic confidence in imaging today.



uConnect™ Remote Capabilities

Exclusively from Terason, this feature allows for the ability to connect wirelessly for upgrades, support, service and collaboration.

A Family of Compatible Transducers

Ergonomic Handle

Small, Lightweight Connector for One-Handed Smart Connection

15L4 Smart Mark™ Linear Array

Arterial, Breast, Carotid, Dialysis Access, Lung, MSK, Neonatal Hip, Nerve Block, Thyroid, Vascular Access, Venous

12L5 Linear Array

Arterial, Breast, Carotid, Dialysis Access, Lung, Neonatal Hip, Nerve Block, Ophthalmic, Testes, Thyroid, Vascular Access, Venous

8L2 Smart Mark™ Linear Array

Arterial, Carotid, Venous

4V2 Phased Array

Cardiac, FAST, TCD

8V3 Phased Array

Pediatric Cardiac, TCD

5C2 Curved Array

Abdominal, FAST, Fetal Cardiac, MSK, OB/GYN, Renal, Thyroid, Visceral

9MC3 Curved Array

Abdominal, Cardiac

8EC4 Endocavity

OB/GYN, Prostate

16HL7 High Frequency Linear Array

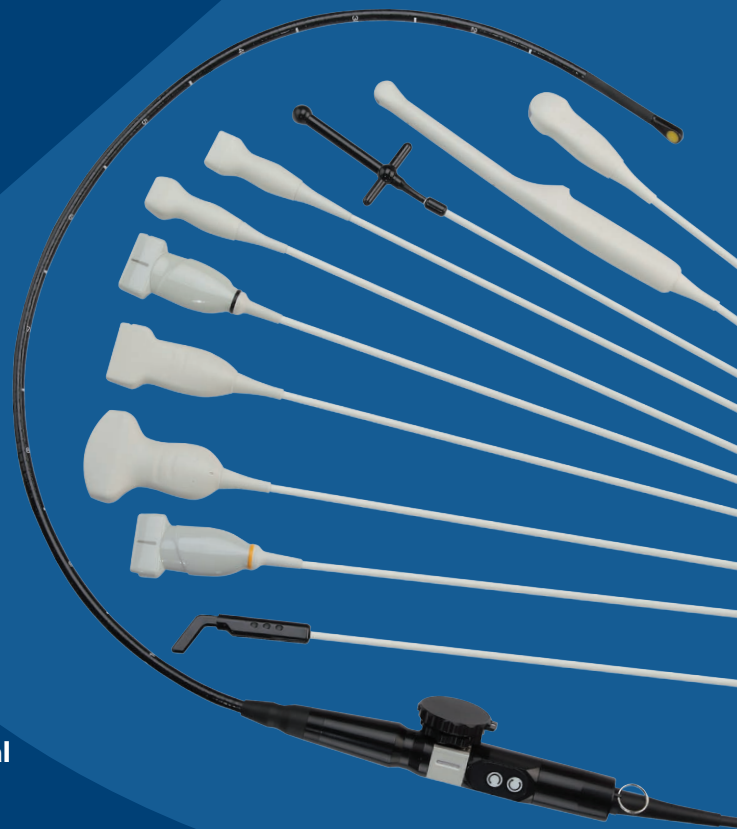
MSK, Venous

Pedoff

Cardiac

8TE3 Transesophageal

Cardiac



The Terason Commitment

We realize the commitment you make to your patients, and we stand behind every customer. From initial training and online support, to our easy upgradeability, you can count on Terason to partner with you, building your trust, bolstering your efficiency and keeping your investment at the forefront of technology for years to come.

uSmart 3300 Ultrasound System Specifications

Imaging Modes

- 2D (B-Mode)
- M-Mode
- Anatomical M-Mode
- Color Doppler
- Pulsed Wave Doppler
- Power Doppler
- Directional Power Doppler
- Continuous Wave Doppler
- Tissue Doppler
- Tissue Harmonic Imaging

System Features

- 1 TB Hybrid Hard Drive
- 802.11 b/g/n Wireless Network
- Processor: 2.5 GHz, Intel® Core™ i7
- 8G RAM DDR3 Onboard Memory
- 15" Backlit Polarized Anti-Glare LCD, Ultra-Wide Viewing Angle
- Removable Lithium Ion Battery
- Imaging Channels: 256
- Dynamic Range: 200 dB
- Video Output: 1024 x 768
- Built-In CD/DVD+RW Drive
- Built-In Camera
- Dual Speakers with Subwoofer
- 4 USB Ports
- Gb Ethernet Port
- 2 HDMI Ports
- DC Input
- Headphone Jack
- Microphone Jack
- Kensington Security Slot
- ECG and Auxiliary Ports
- uConnect™ Remote Capabilities
- Windows® 7 Pro Operating System
- Windows® NTFS EFS Encryption Compatible
- Cold Boot-Up Time: < 35 Seconds

Imaging Features

- Smart Resolution Imaging
- Enhanced Needle Visualization (ENV)
- TeraVision™ II
- OmniBeam™
- Dynamic Depth Resolution (DDR™)
- TeraZoom™
- Trapezoid
- Color/2D
- Triplex/Duplex (Simultaneous/Non-Simultaneous)
- Split Screen
- Full Screen
- Auto Optimization
- 2D Beam Steering
- Application-Specific Presets
- TeraScape™
- Intima-Media Thickness (IMT)

Ergonomics

- Smart Console Design
- Optical Trackball (Full-Size)
- Ergonomic Key Positioning
- Reliable and Responsive High-Quality Controls
- Backlit High-Resolution LCD
- Backlit Keyboard
- Comfort Handle
- Intuitive User Interface
- Tilt Feet

Workflow

- Color Change Controls for Active Mode
- Prospective and Retrospective Capture
- Cine Loop Trim Capability
- Advanced Measurement Tools
- Configurable Report Builder
- Store, Print, Media Export
- JPEG/AVI/BMP/PDF Media Export
- DICOM 3.0
- DICOM Structured Reporting

Measurement Packages

- Cardiology
- OB
- Vascular

Physical System Specifications

- System Height: 3.5" / 89 mm
- System Depth: 15.6" / 396 mm
- System Width: 15.3" / 389 mm
- Weight: 14.8 lb / 6.7 kg

Cart Design and Ergonomics

- Sleek Body Style
- Weight: 85 lb / 38.5 kg
- Mobile Design
- 4-Wheel Steering for Excellent Mobility
- 4 Locking Wheels
- 3 Transducer Holders
- Removable and Washable Gel Holder
- On-Cart Storage Basket
- Transducer Connector Holders
- Cable Management
- OEM Printer Bay
- Multi-Probe Connector Kit (Optional)



Terason Division • Teratech Corporation
77 Terrace Hall Avenue, Burlington, MA 01803 • 1-866-TERASON • 781-270-4143 • www.terason.com

CE 0413

©2015 Teratech Corporation. All rights reserved.
Terason and uSmart are registered trademarks of Teratech Corporation. OmniBeam, TeraZoom, TeraVision, DDR, uConnect, TeraScape, Smart Guide and Smart Mark are trademarks of Teratech Corporation. Windows is a registered trademark of Microsoft Corporation.
Intel is a registered trademark and Core is a trademark of Intel Corporation.
16-3338

REV. 01.05-15