



the uSmart[®]
3200T Plus

the new wave in portable ultrasound

Ready for the future with an optional
AI/AR-enhanced NVIDIA[®] 1280 CUDA[®] Core GPU



uSmart® 3200T Plus

With its 15.7" screen, an intuitive interface, and unparalleled image clarity, the **uSmart® 3200T Plus** is changing the way healthcare providers practice medicine.

Designed with your practice in mind, the uSmart® 3200T Plus utilizes Smart Gestures™ technology, open architecture, touch screen technology, and works with all Terason probes across multiple clinical applications—optimizing workflow and increasing productivity for everyday clinical needs. Every minute counts when your patients need answers. A hot-swappable battery provides 4 hours of typical scanning, so you can be confident you'll get the imagery you need for every case.

As the latest model in our uSmart® series, the uSmart® 3200T Plus reflects our commitment to develop novel, ease-of-use diagnostic tools and minimally-invasive therapeutic surgical devices that can improve patient outcomes and help providers deliver better healthcare.



the new wave in
ultrasound technology:

- affordable
- dependable
- portable





Terason's uSmart® transducers

Our family of lightweight and ergonomic transducers is ideal for easy scanning

see what others miss

Built on our proprietary *SuperHarmonic™* engine platform, our exclusive signal processing chips produce crystal-clear images with high tonality and contrast that are unrivaled in the industry. When you work with Terason, you can see every detail with remarkable clarity and make more informed decisions for patients.

focused on you

- 15.7" Widescreen
- IO-Point Multi-Touch Screen
- Hot-Swappable Battery
- ECG Capabilities
- uConnect® Remote Capabilities
- Smart Gestures™
- CW Doppler
- Multi-Probe Connector Kit
- Compatible with all Terason Transducers
- Intima-Media Thickness (IMT)
- Strain
- uSmartScan™ Exam Protocol Software, Programmable Exam Protocol Software
- Sealed, Cleanable Surface
- Durability Tested
- Fast Boot-Up Time
- 1 TB (Capacity) SSD
- Intel® Core™ i7 CPU with 16GB RAM
- Wi-Fi, Bluetooth, and Wired Connectivity
- USB 3, USB-C, and HDMI Ports
- DICOM 3.0
- Bitlocker® Drive Encryption Capability
- Auto-EF
- Stress Echo

the Terason commitment

We share your commitment to delivering quality care to your patients. With a robust online support infrastructure for system maintenance, training, and upgrades, you can count on Terason to partner with you and keep your investment at the forefront of medical technology for years to come.

The uSmart® 3200T Plus is an indispensable tool for point-of-care applications such as:

- Anesthesia
- Breast
- Cardiac
- Critical Care
- Emergency Medicine
- EMS
- Endocrinology
- Lung Scanning
- Musculoskeletal
- Phlebology
- Vascular Access

14L3 Linear Array



15L4 Linear Array



15L4A Linear Array



16L5 Linear Array



4V2A Phased Array



8V3A Phased Array



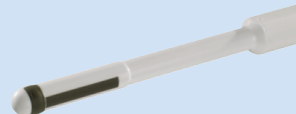
5C2A Curved Array



8TE3 Transesophageal



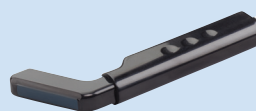
8BP4 Endocavity



XY Bi-Plane Phased Array



16HL7 High Frequency Linear Array





Terason Division • Teratech Corporation
77 Terrace Hall Avenue, Burlington, MA 01803 • 1-866-TERASON • 781-270-4143 • terason.com

CE 0413

©2021 Teratech Corporation. All rights reserved.
Terason, uSmart and uConnect are registered trademarks of Teratech Corporation. Smart Gestures, uSmartScan, and *SuperHarmonic* are trademarks of Teratech Corporation. All other trademarks or registered trademarks are the property of their respective owners. 16-3090 REV. 2.04-21